



Newsletter
Medical Staff

Medical Staff Services are the foundation of a solid, well governed medical staff that prides themselves in providing Midland Memorial Hospital and its customers with the highest quality of patient care possible.

Have You Taken The Pickle Pledge?

"I will turn every complaint into either a blessing or a constructive suggestion."

By taking the pickle pledge, I am promising myself that I will no longer waste my time and energy on blaming, complaining, and gossiping, nor will I commiserate with those who steal my energy with their blaming, complaining, and gossiping.

www.joetye.com



Introducing Our New Practitioners

July 2014

Geoffrey C. Koelling, DDS—Hospital Dentistry
Andrew Robinson, MD—Pediatric Cardiology

Stephen Poly, PA-C—PA, Orthopedics

Volume 2, Number 7

Continuing Medical Education

- July 9th — 'Measurement and Reporting of Cancer Surgery Outcomes' by Thomas Aloia, MD
- July 16th — 'Advances in Breast Reconstruction' by Sunmeet Teotia, MD

New CME guidelines require CME programs represent needs assessments either in the hospital or your clinical settings. The CME Committee is requesting your input on future programs that would benefit your clinical needs and/or challenges.

Please submit all your requests directly to Rebecca Pontaski.

The new ACCME requirements represent a sea of change in how CME providers must plan, develop, implement, and document CME activities. Therefore, you will be held accountable for your pre/post knowledge of the subject by completion of a pre and post test.

July
2014

Medical Staff Leadership

Chief of Staff

John Dorman, MD

Chief of Staff Elect

Sari Nabulsi, MD

Past Chief of Staff

Larry Wilson, MD

Department Chairs

Hospital-Based Services

Steven Rea, MD

Medical Services

Larry Oliver, MD

Surgical Services

Jeffrey Durgin, MD

Preparing for ICD-10—Physician Education Opportunity

Please go to the MMH website—www.midland-memorial.com, under 'For Physicians', Preparing for ICD-10, for information on ICD-10 training through 3M. Notify Rebecca Pontaski, Medical Staff Manager if you would like a login.

Medical Staff Services Reminders

- On the new Midland Memorial Hospital webpage, under 'Find a Physician' is a listing of all physicians on staff. Please review your information for accuracy and notify the medical staff office of any changes.
- Texas Electronic Registrar (TER) Death Registration System—Since 2007, state law requires that all cause-of-death information and medical certifications to the DSHS be submitted electronically. Physicians who do not sign death certificates in a timely fashion face a \$500 fine per violation from the TMB.
- The credentialing information for new applicants to MMH is now updated on the MMH webpage under 'For Physicians'. This includes information for both physicians and AHP's.

In Addition

If you would like to submit information for future newsletters, please email the information to Rebecca Pontaski at rebecca.pontaski@midland-memorial.com.

Rebecca Pontaski, MHA, CPMSM, CPCS, RHIT
Medical Staff Services Manager
432-221-1625

Alma K. Martinez, RHIT
Medical Staff Services Coordinator
432-221-1510

Esther Griego
Medical Staff Assistant
432-221-4629

Medical Staff Office Fax 432-221-4253

CME Hotline 432-221-1635



New Information

New Executive Staff Position, Vice-President of Medical Affairs

At Tuesday night's MEC meeting, Mr. Meyers announced a new position which will be added to the executive staff by the beginning of the next fiscal year. Larry Wilson, MD, Emergency Department Medical Director was announced as the fill for the position.



Quick Guide to H&P Guidelines Per CMS 2014 Requirements

- Must be on chart before surgery.
- H&P has to be written within 30 days of procedure.
- H&P Update is needed if H&P was started at any time before patient was admitted to hospital. Update is still needed even if the H&P is signed the morning of surgery.
- NP and PA can do H&P and Update, but both have to be signed by MD before procedure.
- Any and all H&Ps, and Updates, must be dated, timed, and signed.
- Updates may be under the title of Progress Notes.
- For emergencies, no H&P required preop, however a short description of planned procedure must be in ProgressNote prior to procedure.
- If the patient comes from the ER, the ER MDs assessment can be used as the H&P.
- For inpatients, there must be an initial H&P within 24 hours of admission, with daily progress notes, and with a note that indicates the patient is having surgery. No update is needed.
- The initial H&P can be written by a medical doctor.
- Dentists cannot write the H&P. It must be written by a medical doctor.
- H&P must be written by MD/DO/NP/PA that has privileges to work in the hospital.

Rules and Regulations Updates

Please use the following link to review the updated rules and regulations: <http://www.midland-memorial.com/For-Physicians/Rules-and-Regulations/12378/Content.aspx>. Changes were made to the following areas:

- Emergency Care Services and Responsibilities
- Medical Records Delinquency

AMA June 2014 Annual Meeting

AMA Adopts New Recommendations on Telemedicine: <http://www.ama-assn.org/ama/pub/about-ama/our-people/ama-councils/council-medical-service/reports-house-delegates-meeting/june-2014-annual-meeting.page>.

NICHE (Nurses Improving Care for Healthsystem Elders)

NICHE is a premiere national geriatric nursing program designed to help hospitals improve the care of older adults. The vision of NICHE is for all patients 65 and over to be given sensitive and exemplary care. Their mission is to provide principles and tools to stimulate change in the culture of healthcare facilities to achieve patient centered care for older adults. There are over 500 hospitals in the United States, Canada and Bermuda that have received the NICHE designation with over 100 hospitals joining every year. This designation demonstrates a hospital's commitment to improving quality, enhancing the patient and family experience, and supporting the hospital's efforts to serve their communities. We are pioneers in the West Texas area because the closest NICHE hospital to MMH is in El Paso!

On June 11, 2014, MMH opened the first 8 bed ACE Unit (Acute Care of Elderly) within 250 miles! This unit is an approach to older adults' hospital care that is designed to maintain function and limit iatrogenesis and complications that can arise during a hospital stay. This model has been in existence since the 1980's and has shown positive outcomes including: decreased lengths of stay; decrease in falls and nosocomial pressure ulcer rates, reduction in high risk medications and improved satisfaction of patient, family, physician and nurse. Daily inter-professional rounds and a smaller nurse/patient ratio are cornerstones to the success of the ACE unit! Lori Wingate, DNP, RN, GNP-BC has been hired as the NICHE Coordinator for MMH.




CareVue *to replace* EDITH

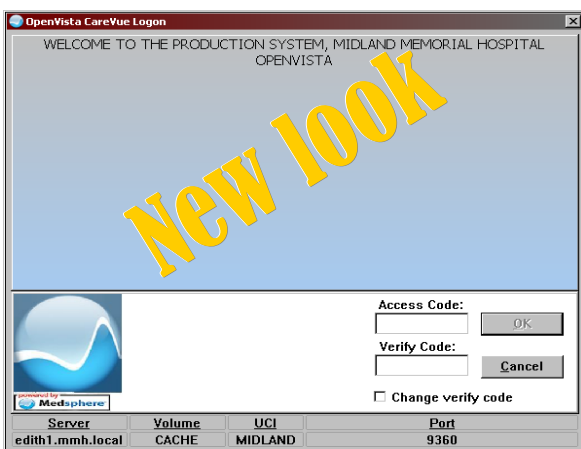
* Official Announcement * Physicians & Physician Offices

The current version of our Electronic Medical Record “EDITH” will be *discontinued* on **July 1st (2014)**

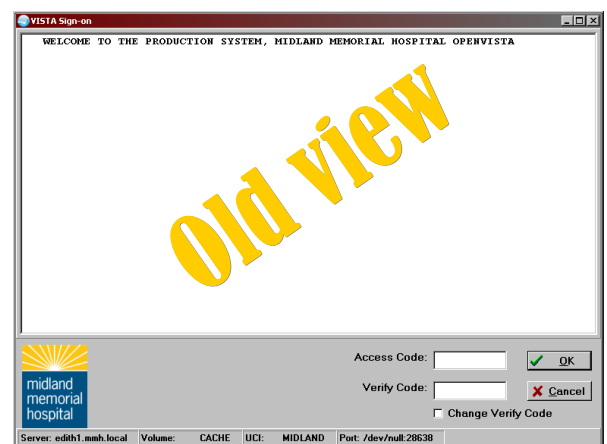
Starting today, all physician and office PC’s that are currently using EDITH should upgrade to CareVue with these steps.

- Launch your VPN connection to Midland Memorial Hospital
- Type this link address in your Internet Explorer address bar: “ \\Mmhupdate\CareVue\CareVue_Icon ”
- Copy the CareVue icon  to your pc desktop: (1) double click the icon to start the upgrade (2) log in to CareVue to complete the update. *Normally, this will take from 20 –30 minutes to complete.* Please note that your current “verify” and “access” codes will remain the same. *Don’t hesitate to contact our Help Desk if you experience any issues with your update.*

CareVue Training Tutorial is available at this link: ” \\Mmhupdate\CareVue\CareVue_Icon\VistaCareVue.ppsx ”



If your office does not have VPN connectivity, please contact the HIS Help Desk (432) 221-4040



Help Desk
Hospital Information Systems
432-221-4040